



2008 NEWPORT BERMUDA RACE®

SAILING INSTRUCTIONS

BERMUDA RACE ORGANIZING COMMITTEE

L.E. "Nick" Nicholson, Chairman

Ross E. Sherbrooke, Commodore, CCA

Ralph E. Richardson, Commodore, RBYC

William Barton
Dorsey M. Beard
Brian Billings
W. Frank Bohlen
John Brooks
Richard Burnes
Andrew Burnett-Herkes
Richard Casner
Andrew Cox
P. Leslie Crane
Robert S. Darbee III
Edwin G. Fischer, MD
Brin R. Ford

Henry F. Halsted
Rush Hambleton
Joseph S. Harris
Bjorn Johnson
M. William Langan
Sheila McCurdy
John M. Mendez
Peter D. Millard
David Notman
John Osmond, MD
Eugene Rayner
John Rousmaniere
Edward S. Rowland

Edward S. Rowland, Jr.
Ross C. Santy
Richard S. Shulman, MD
H. Charles Tatem
Stephen E. Taylor
R. Steven Thing
Ron Trossbach
B. W. 'Jordy' Walker
Hubert Watlington
Talbot Wilson
John Winder

STARTING LINE COMMITTEE

John L. Myles, Jr., Principal Race Officer

George W. Babcock
Clare J. Gesualdo
Patricia Ann Jayson
John M. Mendez

Pauline Mendez
Dorothy B. Myles
Ellyn Coyle Osmond
Raymond S. Perry

Eric P. Richards
Allegra M. Torrey
A.R.G. Wallace, MD

FINISHING LINE COMMITTEE

Eugene Rayner, Chairman

INTERNATIONAL JURY

Richard Kempe (BER), Co-Chairman

Arthur J. Wullschlegler (USA), Co-Chairman

Robert Conner (USA)

Robert Duffy (BER)

Andrew Wardle (CAN)



2008 Newport Bermuda Race®



SAILING INSTRUCTIONS

Friday, June 20, 2008

1. RULES

1.1. The Newport Bermuda Race will be governed by the Racing Rules of Sailing (RRS 2005-2008) including US Sailing Prescriptions, the 2008 Newport Bermuda Race® Notice of Race, the 2008 Offshore Racing Rule (ORR), the 2008 IRC Rule, the 2008-2009 ISAF Offshore Special Regulations for Category 1 including US SAILING Prescriptions, the Class Rules for eligible one-design classes (except as any of these are altered by the Notice of Race and these Sailing Instructions), and by these Sailing Instructions.

1.2. For the purposes of RRS 79 and RRS Appendix 1, this regatta is designated "Category C."

1.3. RRS Part 2 will be replaced by Part B, the Steering and Sailing Rules, of the International Regulations for Preventing Collisions at Sea (COLREGS) between the hours of local sunset and sunrise.

1.4. RENDERING ASSISTANCE

1.4.1. Observance of RRS 1.1, Helping Those in Danger, is mandatory. A yacht failing to comply shall be subject to protest that may result in penalties or disqualification.

1.4.2. At the discretion of the International Jury, an elapsed time credit may be given to a yacht complying with RRS 1.1.

1.4.3. To receive such credit, the Captain of the yacht rendering help must submit to the International Jury within the time period described for protests in section 15.1 below, detailed information in writing, on the time spent and the extra distance traveled, if any.

2. NOTICES TO COMPETITORS

2.1. Notices to Competitors will be posted before the Start on the Official Notice Board at the Newport Bermuda Race Committee (hereinafter called the Committee) Office at the Newport Yachting Center, Newport, RI and after the Finish at the Official Notice Board of the Royal Bermuda Yacht Club, Hamilton, Bermuda.

3. CHANGES TO SAILING INSTRUCTIONS

3.1. Changes to Sailing Instructions and/or Appendices will be posted on the Official Notice Board prior to 0900 EDT on the day the race starts.

4. SIGNALS MADE ASHORE

4.1. Signals will be displayed from the western yardarm of the flagpole at New York Yacht Club Harbour Court at 0930 on the day of the start, accompanied with announcements on VHF Ch. 72.

4.2. Flag A (Alpha) indicates that the Start will be in the vicinity of Castle Hill Lighthouse.

4.3. Flag B (Bravo) indicates that the Start will be in the vicinity of Brenton Point Lighted Whistle Buoy R "2" QR.



2008 Newport Bermuda Race®



- 4.4. Flag AP (Answering Pennant) indicates Postponement. The AP will be lowered two hours prior to the warning of the first class to start, accompanied by an announcement on VHF Ch. 72.
- 4.5. Flag AP over Flag B flown on Friday June 20th means that the start will be on Saturday June 21st at location BRAVO "B."
5. STARTING LOCATION
 - 5.1. The starting location ALPHA will be approximately 1/2 mile from Castle Hill Lighthouse.
 - 5.2. The starting location BRAVO is in the vicinity of R "2" QR Whistle Buoy (located approximately 1.7 miles and 195 degrees magnetic from Castle Hill Lighthouse). In case of inclement weather and/or reduced visibility, the alternate starting location BRAVO will be signaled at 0930 on race day. The Committee Vessel will fly flag Bravo, the New York Yacht Club at Harbour Court will fly flag Bravo and an announcement will be made on VHF Ch.72.
6. CLASS IDENTIFICATION
 - 6.1. Each yacht shall fly the numeral pennant(s) (the size to be at least 8 inches on the hoist) of her class from the backstay for one hour before the first signal until an hour after the start of the last class.
7. PRE-START CHECK-IN
 - 7.1. Each yacht shall check-in, prior to her Warning Signal, with the Auxiliary Committee Vessel flying the Cruising Club of America (CCA) Burgee and a yellow Auxiliary Race Committee flag stationed in the vicinity of the day beacon on the north end of Fort Adams.
 - 7.2. Yachts shall pass within 200 feet of the Auxiliary Committee Vessel and announce their name and sail number on VHF Ch. 6, transmitting at low power. This will be acknowledged on VHF Ch. 6.
 - 7.3. The Auxiliary Committee Vessel will be on station two hours prior to the first Warning Signal.
8. STARTING TIMES - EASTERN DAYLIGHT TIME (EDT)
 - 8.1. The race will be started in accordance with RRS 26, with classes starting at "10-minute" intervals.

Sequence:

1250 Flag "F" Attention
1254 Flag "F" down, 1 minute to warning for First Class to start
1255 Warning for First Class to start
1256 Prep signal for First Class to start
1259 Prep signal down
1300 Start: First Class
1305 Warning for Second Class to start
1306 Prep signal for Second Class to start
1309 Prep signal down
1310 Start: Second Class
1315 Warning for Third Class to start
1316 Prep signal for Third Class to start
1319 Prep Signal down
1320 Start: Third Class

And so forth in accordance with Rule 26



2008 Newport Bermuda Race®



- 8.2. Scratch Sheets containing Class Assignments, Class Flag designations and the order in which classes will start will be available at the Captains' Meeting held at the Jane Pickens Theatre, Newport, RI, on Thursday, June 19th at 1700 EDT.
9. START
- 9.1 Starting Line - The starting line at either location will be between an orange flag flown from a staff on the committee vessel and an 8 foot YELLOW tetrahedron inflatable mark.
- 9.2. The Starting Line Restricted Area will extend 300 yards perpendicularly north and south of the starting line and 100 yards radially from its ends. Yachts shall keep clear of the restricted area until after the start of the class preceding her own start. Yachts failing to abide by this restriction will be subject to protest by the Race Committee. The Starting Restricted Area as defined above and as illustrated in APPENDIX A will be the same for Starting Location Alpha and Alternate Starting Location Bravo.
- 9.3. Individual Recalls shall be signaled in accordance with RRS 29.1. In addition, an effort may be made to hail the sail number of each premature starter on VHF Ch. 72. Failure of a yacht to see or hear her recall notification shall not relieve her of her obligation to start correctly and shall not be grounds for redress.
- 9.3.1. At the option of the Jury, a yacht starting before her start time, and not returning, may be penalized by having her elapsed time increased by 2 hours. This changes RRS 29.1.
- 9.4. General Recalls will be made in accordance with RRS 29.2.
10. COURSE
- 10.1. From the Starting Line off Newport, Rhode Island to the Finish Line off St. David's Light on St. David's Head, Bermuda. The Islands of Bermuda shall be passed to starboard.
11. GOVERNMENT MARKS
- 11.1. Government marks may be disregarded, except that R Bell "6", R Gong "4" and R Bell "2A" in the Newport area, and North Rock Beacon, N.E. Breaker Beacon, Kitchen Shoals Beacon, Mills Breaker Buoy in the Bermuda Area, must be passed on the proper hand (seaward side).
12. RADIO PROCEDURES
- 12.1. Each yacht shall guard VHF Ch. 72 commencing at 0930 hours on the day of the race until ten minutes after a yacht's start except during Pre-Race Check-In. Thereafter, yachts shall stand a continuous radio watch on VHF Ch. 16.
- 12.2. Each yacht shall provide a periodic report of its position by means of an automatic transponder. In the event a yacht becomes aware that its transponder is not functioning, the yacht shall communicate with the Communications Station, not less than once each day, by any available means. Communications with the Communications Station, the Finish Line Committee, and other required communication procedures are described in detail in Appendix B of these Sailing Instructions.
- 12.3. Intentional disabling of the transponder by any means shall be subject to protest that may result in penalties or disqualification.
- 12.4. Use of transmitting devices, except for satellite communications to public websites, Radar, or for compliance with race requirements, shall be disclosed on the Certificate of Compliance.



2008 Newport Bermuda Race®



- 12.5. In the event that life saving equipment is lost overboard, it should be retrieved. If recovery is impossible, loss of such equipment that is floatable shall be reported to the Communications Station by any available means, and shall be announced by the yacht on VHF Ch. 16.
13. FINISH LINE
- 13.1. The Finish Line Committee will be at St. David's Head. Violation of Finish Line instructions as detailed in this paragraph and paragraph 5 in Appendix B, may result in a protest and the imposition of a penalty.
- 13.1.1. The Finish Line will be on a line bearing 111 degrees magnetic from St. David's Light (at the intersection of its red and green sectors). The shoreward end of the line will be approximately 0.6 miles from St. David's Light and will be marked by a green buoy with a green flashing light. The line will be approximately 0.4 miles long and its seaward end will be marked by a black buoy with a white flashing light. Neither buoy will necessarily be on the Finish Line.
- 13.1.2. Yachts shall cross the Finish Line from North to South between the two buoys and are advised to sail well beyond the Finish Line to be certain that they have actually crossed the line.
- 13.1.3. Yachts shall not pass through a line joining the green buoy marking the shoreward end of the line and St. David's Light whether before or after finishing. Note the shoal waters to the west of the Finish Line.
- 13.1.4. After finishing, yachts shall not re-cross the Finish Line and shall keep well clear of the line and all yachts approaching the line to finish.
- 13.1.5. Radio procedures at the Finish Line are provided in APPENDIX B.
- 13.1.6. Visual identification. Each yacht finishing at night shall, when approximately five minutes from the Finish Line, shine a powerful light on her shoreward sail number for 15 seconds, repeating this illumination when approximately two minutes from the line and again as she finishes.
- 13.1.7. If unable to make radio contact, a yacht shall identify herself at night to the Committee by flashing her sail number in Morse Code, repeating the signal at least five times.
- 13.2. Each yacht shall take the time (EDT) of her own finish when St. David's Light bears 291 degrees magnetic and enter that time on her Certificate of Compliance.
- 13.3. The Committee will be based at St. David's Head to observe the finish of yachts until 1200 hours ADT on Friday, June 27, or earlier, at its discretion, after attempting to notify all yachts still not finished.
14. PENALTIES
- 14.1. Any yacht failing to report its position in the event of a transponder failure may be penalized ten (10) minutes of elapsed time for each infraction.
- 14.1.1. Any yacht that willfully reports a false position infringes RRS 2 (Fair Sailing).
- 14.1.2. When a yacht is penalized by having her elapsed time adjusted, her class and fleet positions will be scored according to the adjusted times after correction.
- 14.2. The 720-degree turn penalty RRS 44.2 shall not apply.



2008 Newport Bermuda Race®



- 14.3. The International Jury may at its discretion penalize a yacht by increasing her elapsed time by an amount the Jury deems appropriate.
15. PROTESTS
- 15.1. Protests shall be in writing in accordance with RRS 61, and shall be delivered to the Duty Officer at the RBYC within four hours of the protesting yacht's finish if she finishes between 0600 and 1600 ADT, otherwise by the first 1000 ADT after she finishes.
16. CERTIFICATE OF COMPLIANCE
- 16.1. The Certificate of Compliance Form provided in the Race Entry Package shall be completed and signed by the Captain, Navigator, and by each Watch Officer. This Certificate shall be signed and delivered as soon as practicable, and no more than 18 hours after finishing, to the Race Duty Officer at the Royal Bermuda Yacht Club. A yacht will not be officially scored until this executed Certificate has been filed.
- 16.2. Any deviation, either voluntary or involuntary from the requirements of the 2006 Notice of Race, Sailing Instructions, ORR Rule or IRC Rule, as applicable, shall be reported in detail, in writing and filed as an amendment to the yacht's Certificate of Compliance.
- 16.3. Yachts who have not filed their On-Board Training Certificate at Newport Check-In are required to submit it with their Certificate of Compliance. A yacht will not be officially scored until this executed Certificate has been filed. Training Drills must be completed prior to the start of the race.
- 16.4. Yachts who were unable to communicate their position to the Race Communications Station must make a notation on their Certificate of Compliance giving the date(s) and reason(s) for failing to report.
- 16.5. The Newport Bermuda Race® Accident and Illness Survey Form provided in the Race Entry Package is to be completed and returned to the Duty Officer at RBYC.
- 16.6. The Committee will review Certificates of Compliance and On-Board Training Certificates. Any deviations, exceptions or omissions will be noted and the Committee may file protests in accordance with RRS 60.2.
17. WITHDRAWAL FROM RACE
- 17.1. A yacht withdrawing from the race shall, as soon as possible, report such fact to the Communications Station by any available means, or on VHF Ch. 16 to any yacht with a request to relay such message. A yacht that has withdrawn shall continue to make daily position reports in compliance with Appendix B until arriving at a destination. Once ashore, each withdrawing yacht shall confirm the reporting of her withdrawal to the Communications Station or Race Headquarters at RBYC, Bermuda at Tel: (441) 295-2214 or Bermuda Radio Tel: (441) 297-1010.
- 17.1.1. The Captain of such a yacht shall report the circumstances in writing to the Race Committee Chairman, Newport Bermuda Race, 518 Thames Street, Suite 418, Newport, RI 02840 no later than July 14, 2008.
18. INSPECTION
- 18.1. The Committee reserves the right to re-inspect any yacht for compliance with race requirements after the yacht finishes or any time after the yacht has arrived in Bermuda. Failure to be in compliance subjects the yacht to protest which may result in penalties or disqualification.
19. SCORING
- 19.1. Scoring will be in accordance with RRS Appendix A.



2008 Newport Bermuda Race®



- 19.2. Corrected Times for all ORR yachts will be calculated using Performance Curve Scoring (PCS) for the Newport Bermuda Race Ocean Course.
- 19.3. Time allowances for IRC yachts will be calculated using the yacht's TCC on a Time On Time (TOT) basis.
- 19.4. Course Distance for all Divisions will be 635 miles.



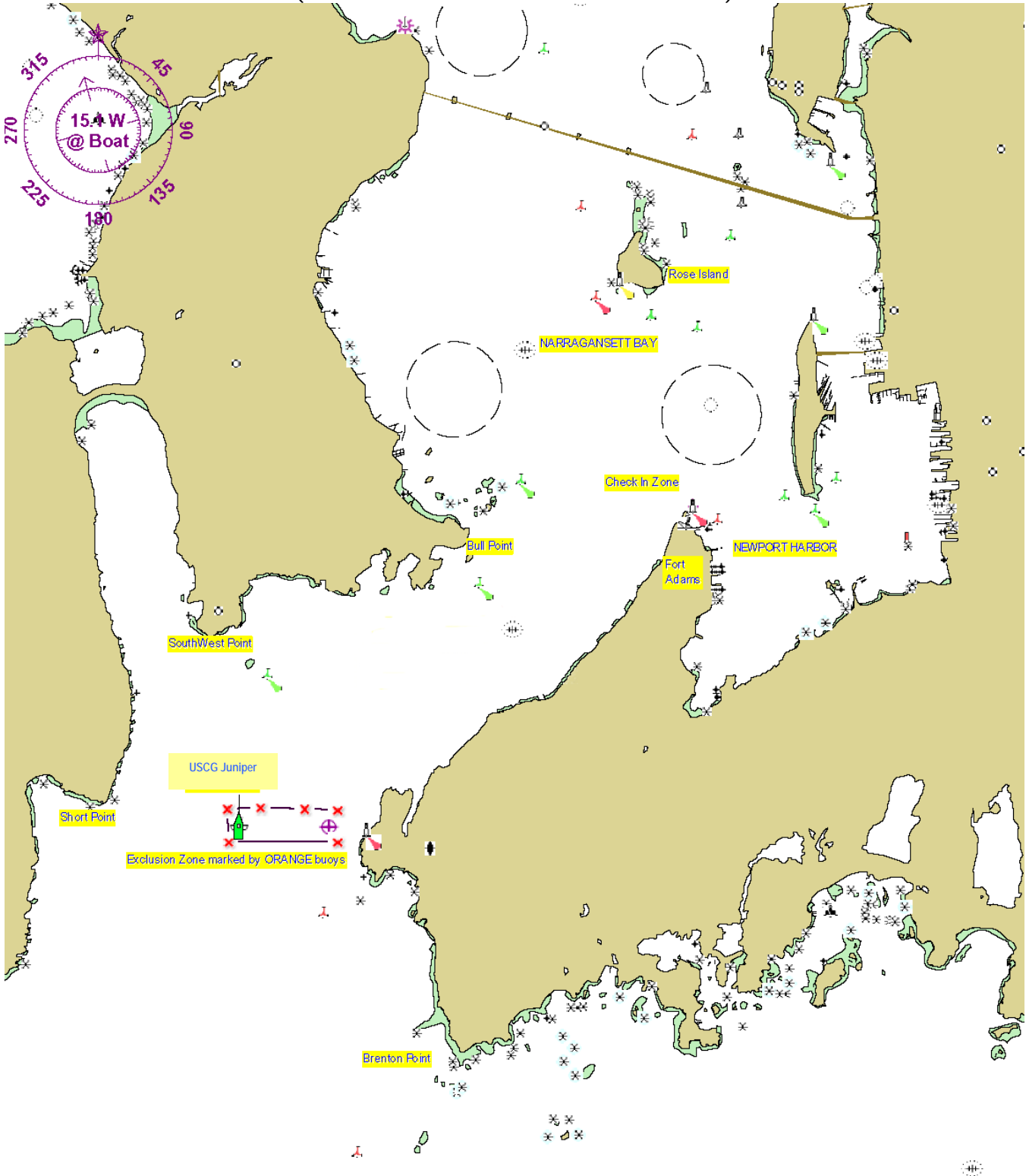
2008 Newport Bermuda Race®



SAILING INSTRUCTIONS

APPENDIX A – Starting Area Chart

For illustration only – not for navigational purposes
(Note: Exclusion Area Not Drawn To Scale)





2008 Newport Bermuda Race®



SAILING INSTRUCTIONS Appendix B - Radio Communications

1. RACE DAY

- 1.1. Except during Pre-Start Check-In, race yachts shall guard VHF Ch.72 commencing at 0930 the day of the race until ten minutes after a yacht's start.
- 1.2. During Check-In each yacht shall announce her name and sail number on VHF Ch. 6, transmitting at low power while passing the Check-In Vessel anchored in the vicinity of Fort Adams Light 2 Day beacon. The Committee will acknowledge on VHF Ch. 6.
- 1.3. Should the Committee, for any reason, wish to delay participating yachts' departure for the Starting Line, an announcement will be issued at 0930 it will make such announcements commencing at 0930 on the day of the start on VHF Ch. 72.

2. STARTING LINE COMMUNICATIONS

- 2.1. Upon entering the starting area each yacht shall guard VHF Ch. 72 for transmissions from the Committee to the competitors and shall continue to do so until 10 minutes after starting. Thereafter, each yacht shall commence a continuous radio watch on VHF Ch. 16.

3. MANDATORY DAILY CHECK-IN

- 3.1.1. Upon becoming aware that its position reporting transponder is not operating properly, each yacht shall provide a report of its daily position as of 0800 EDT to the Communications Station by any available means no later than 1100 EDT. The Committee at the Communications Station may ask for additional position reports at regular intervals.
- 3.1.2 All yachts are requested to relay any communications, including position reports, to the Communications Station.
- 3.2. While manned, the Communications Station will guard HF 4125 kHz except when making regular broadcasts or conducting emergency communications.
- 3.3 The Communications Station will issue a broadcast of weather information and other announcements, daily, at 0800 EDT on 4149 KHz (ITU 452) or 6227 KHz (ITU 652). 4149 KHz will be the preferred and primary frequency.
- 3.4. Yachts retiring from the race are to continue regular position reporting until they have safely reached port at which time they shall notify the Communications Station.
- 3.5. Additional communications information may be distributed at the Captains' Meeting.
- 3.6. Special announcements may be issued by the Communications Station at any time on 4125 KHz and VHF Channel 16, by a trailer to Station NMN's weather broadcast or by Herb Hilgenberg's daily broadcasts.

4. EMERGENCY COMMUNICATIONS

- 4.1. The Committee will guard 4125 KHz and VHF Ch. 16 at the Communications Station and will handle emergency or essential traffic. Except in the event of distress, yachts should shift to 4129 KHz or another frequency as directed for other communications needs.
- 4.2. When feasible, the Committee at the Communications Station will receive emergency and urgent messages from the Race Headquarters ashore and attempt to relay messages to a yacht.



2008 Newport Bermuda Race®



5. FINISH LINE COMMITTEE COMMUNICATIONS

- 5.1 When a yacht is approximately five miles from the Finish Line, she shall make an initial call to the Committee on VHF Ch. 72 and announce her name and sail number only. This call will be acknowledged by the Committee.
- 5.2 Within two minutes after finishing, each yacht shall communicate with the Committee on VHF Ch. 72 giving her name and sail number. This call will be acknowledged by the Committee. Each yacht shall guard this channel for 30 minutes after finishing to permit receipt of instructions, if any, from the Committee. Such instructions may include a request for boarding and inspection by the Committee.
- 5.3 Following the 30 minute standby period noted in 5.2 above, yachts should stand by VHF Ch. 16 while in Bermuda waters.



2008 Newport Bermuda Race®



PRIZES – 2008 NEWPORT BERMUDA RACE

Award	Qualification	Donor
St. David's Lighthouse Trophy	Corrected Time Winner St. David's Lighthouse Division	Bermuda Dept. of Tourism
Gibbs Hill Lighthouse Trophy	Corrected Time Winner Gibbs Hill Lighthouse Division	Royal Bermuda Yacht Club (RBYC)
Carleton Mitchell <i>Finisterre</i> Trophy (Perpetual)	Corrected Time Winner Cruiser Division	Cruising Club of America (CCA) and Mrs. Ruth Mitchell
Royal Mail Cup (Perpetual)	Corrected Time Winner Open Division	RBYC
Philip S. Weld Prize	Corrected Time Winner Double-Handed Division	CCA Boston Station
North Rock Beacon Trophy	Best IRC corrected time in combined Gibbs Hill Lighthouse and St. David's Lighthouse divisions	RBYC
<i>Moxie</i> Prize	Crew of Corrected Time Winner Double-Handed Division	CCA Boston Station
Corinthian Trophy	Best Performance by an All-Amateur St. David's Lighthouse Division	E. Llwyd Ecclestone
CCA Bermuda Station Trophy	Best Corrected Time by a Vessel Skipped by a CCA or RBYC Member St. David's Lighthouse Division	CCA Bermuda Station
<i>Dorade</i> Trophy	Best Corrected Time by a "Vintage" Yacht. (launched Prior to 1970) Sailing Under ORR.	CCA
<i>Edlu</i> Tankard	Yacht with Second Best Corrected Time St. David's Lighthouse Division	R.J. Schaefer
Overall Performance Trophy	St. David's Lighthouse Class Winner on Corrected Time Which Beats the Next Two Yachts in Her Class by Largest Margin	Walter Wheeler, Jr.
Thomas Fleming Day Memorial Trophy	Yacht Under 40' with Best Corrected Time St. David's Lighthouse Division	Frederick B. Thurber, CCA Charter Member
City of Newport Trophy	Highest Placing "Foreign" Yacht (Non- US, Bermuda or Cayman) in St. David's Lighthouse Division	City of Newport, RI
William C. Finley Trophy	Yacht Older Than 15 Years with the Best Corrected Time in St. David's Lighthouse Division	William C. Finley
Maritime Museum Prize	Yacht Older Than 15 Years With the Second Best Corrected Time in St. David's Lighthouse Division	Bermuda Maritime Museum
Birdseye Cedar and Sterling Silver Plaque	First Yacht to Finish St. David's or Gibbs Hill Lighthouse Division	The Mayor of Hamilton on Behalf of the Corporation of Hamilton
"First to Finish" Prize	First Yacht to Finish Open Division	CCA/RBYC



2008 Newport Bermuda Race®



Award	Qualification	Donor
Herbert L. Stone Memorial Trophy	First Yacht to Finish Cruiser Division	Friends of Herbert L. Stone, a Proponent of the "Modern Bermuda Race"
Harvey Conover Memorial Trophy	Second Yacht to Finish St. David's or Gibbs Hill Lighthouse Division	Former Flags, RBYC
H. Irving Pratt Trophy	Winning 3 Yacht Team St. David's Lighthouse Division	CCA Friends of Irving Pratt
Frederick Avon Burrows Memorial Bowl	First Bermuda Yacht on Corrected Time in St. David's Lighthouse Division	Mrs. F.A. Burrows
R.M. "Dick" Masters Trophy	First Bermuda Yacht Which Beats the Second Bermuda Yacht by the Largest Margin in Her Division	Mrs. Lorna Masters
George W. Mixter Trophy (2)	Navigator of a Yacht Winning a Lighthouse Trophy. 2 Awards, One Each for St. David's and Gibbs Hill	Mrs. Findlay Downs
Schooner <i>Mistress</i> Trophy	Navigator of First Yacht to Finish St. David's or Gibbs Hill Lighthouse Division	Crew of <i>Mistress</i>
Navigator's Prize	Navigator of Yacht With Best Corrected Time Cruiser Division	Bermuda Race Organizing Committee (BROC)
Rod Stephens Seamanship Trophy	Outstanding Act of Seamanship. Awarded at CCA Annual Mtg. to Winner Selected from All Venues. Race Nominees are Prime Candidates.	Friends and Shipmates of CCA Commodore Roderick M. Stephens, Jr.
William Snaith Memorial Trophy	Designer of Yacht Winning St. David's Lighthouse Trophy	Storm Trysail Club
<i>Latifa</i> Challenge Cup	Class Winner in Gibbs Hill Lighthouse Division	Michael Mason
Vincent J. Monte-Sano Trophy	First in Class Winner	CCA New York Station
Essex Station Trophy	First in Class Winner	CCA Essex Station
Ray Graham Bigelow Memorial Trophy	Class Winner in St. David's Division	Mrs. F. Lieber
Sir Thomas Lipton Memorial Trophy	Class Winner in St. David's Division	Robert B. Smallwood
<i>Malabar</i> Trophy	Class Winner in St. David's Division	Mrs. John Alden
Alfred E. Loomis Trophy	Class Winner in St. David's Division	Friends of A.L.
Samuel Pepys Trophy	Class Winner in St. David's Division	Royal Navy Sailing Association
Argentine Trophy	Class Winner in St. David's Division	Yacht Club Argentino
Onion Patch Trophy	Team Winning Onion Patch Series (IRC)	RBYC
Henry B. duPont Memorial Trophy	Overall Winner for Onion Patch Series by Yacht in Newport Bermuda Race (IRC)	Pierre S. DuPont
Catherine Hollis Memorial Trophy	Best Corrected Time in this Race by an Onion Patch Competitor (IRC)	The Thad A. Hollis Family
American Businessman's Trophy	2 nd Team in Onion Patch Series (IRC)	American Business Lunch Club



2008 Newport Bermuda Race®



Award	Qualification	Donor
Gurnet Rock Trophy	Bermuda Yacht with Best Score in the Onion Patch Series (IRC)	William Kempe
Bermuda Cruising Yacht Trophy	Best combined performance between current Newport Bermuda Race and Previous Marion Bermuda Race	Sail Magazine
Olin Stephens Ocean Racing Trophy	Best combined finish (ORR) in the current Newport Bermuda Race (Gibbs Hill Lighthouse and St. David's Lighthouse divisions) and the previous Marblehead to Halifax Ocean Race	Friends of Olin Stephens
Family Participation Prize	Best Corrected Time by a St. David's Vessel with at Least 4 Family Members, 1 or More in the Afterguard. (Specific Entry Form Required.)	BROC
Family Participation Prize	Best Corrected Time by a Cruiser Division Vessel with at least 4 Family Members, 1 or More in the Afterguard. (Specific Entry Form Required.)	BROC
Commodore & Mrs. Robert L. Hall Swan Trophy	"Swan" Yacht with Best Corrected Time in the St. David's Division	The Hall Family
Destroyers Atlantic Trophy	Service or Maritime Academy Yacht with Best Corrected Time in St. David's Lighthouse Division	COM CRU DES LANT
Battle of the Atlantic Trophy	Service or Maritime Academy Yacht with Second Best Corrected Time in St. David's Lighthouse Division	US Coast Guard and Merchant Marine Academies
Captain Scarritt Adams Trophy	USNA Yacht with 2 nd Best Corrected Time in St. David's Lighthouse Division. (Awarded at Annapolis.)	Mrs. Poppy Adams
Stephen W. Gerber Cup	USNA Yacht with Best Corrected Time in St. David's Lighthouse Division. (Awarded at Annapolis.)	US Navy
Dan A. Kimball Trophy	Navigator of USNA Yacht with Best Corrected Time in St. David's Division. (Awarded at Annapolis.)	US Navy
Galley Slave Trophy	Cook of the Last Yacht to Finish	RBVC

Up to Four Prizes May be Awarded per Class Based on the Number of Starting Vessels as Follows:
 First (1-3), Second (4-7), Third (8-11), Fourth (12+)



2008 Newport Bermuda Race®



NOTES



2008 Newport Bermuda Race®



NOTES